

YOUR COMMERCIAL LANDSCAPING FALL CLEANUP CHECKLIST

Fall cleanup protects your commercial landscaping through the winter while also ensuring everything comes back ready to thrive in the spring. Don't let winter sneak up on you. Use this fall cleanup checklist to get your commercial properties ready for fall and winter.



Plant care

Your landscaping partner should remove dead branches and prune as needed. For colder climates, they should also wrap bushes or shrubs planted within the past three years before freezing temperatures arrive.



Tree maintenance

Fall cleanup for your trees typically involves a light final pruning to remove overgrown or damaged branches.



Leaf removal

Leaf and debris removal helps prevent your turf from rotting and eliminate fall hazards. Plus, it aids with visibility to allow your commercial property to be staked for snow removal.



Winterization

If you shut down the irrigation systems on your commercial properties during the winter months, you'll also want to completely flush out your system to avoid broken water lines and related repair costs.



Winter policing

Common in warmer climates, winter policing involves the removal of debris, trash or any extra foliage that falls beyond a typical fall cleanup timeframe. It can be part of a minimal maintenance plan that carries your landscaping through the winter.



Drain cleaning

Clearing drains and drainage areas of leaves and debris can help avoid blockages and flooding from winter precipitation.



Fertilizing

Fertilizing in the fall can help discourage weed development late in the season that can lead to weed overgrowth in the spring.



Mulching

As mulch beds typically wear down, wash away and get overturned by foot traffic during the summer months, a fall top-off can help them maintain their appearance before snow arrives as well as protect your plants through the winter.



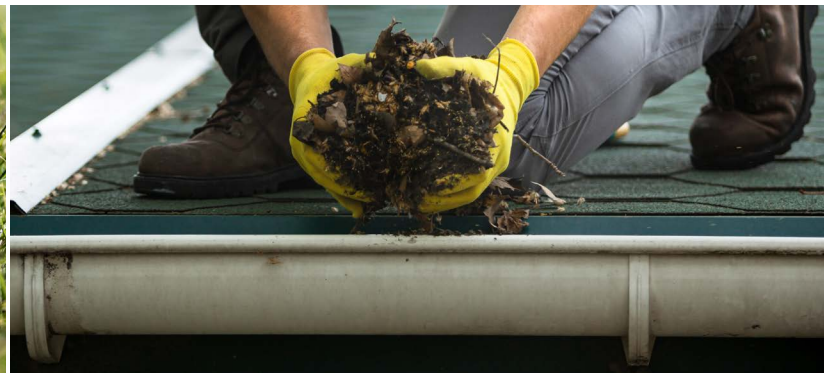
Aeration

Fall aeration removes excess thatch buildup and promotes growth at the roots, which helps your turf absorb and retain water and nutrients.



Gutter cleanup

Ensuring gutters filled with leaves and debris are blown out in the fall can help avoid clogs as well as roofing problems like leaks or water damage—and costly repairs.



Schedule your fall cleanup service now

Need assistance with landscaping fall cleanup for your commercial properties?
Contact **MCS** or **Chain Store Maintenance** for a quote and to find out how we
can help with all your landscaping needs.